

Activities of ASPEUS

1. Research Section



J. P. Agrawal



Parul Agrawal

For this magazine 2019-3rd issue, the following vital sections preserved are put forth here. Among them are –

- A - Cancer treatment acu points by Sri M P Khemka (TCM) and Sri J P Agarwal (AA) prepared for a research project and submitted to SVYASA Bangalore in 2018.
- B - Work on Ayurvedic Tuyathata system and a synopsis of treatment feedback by Miss P Agarwal, based on Brain and spine points.
- C - New books published after conference 2018 till aug 2019.
- D - Further developments and queries.

A- Acupressure points for the common symptoms of CANCER By Sri MPK, SRI JPA (mainly Oral, Breast, Cervix cancer)

(very soon a pocket book will be available with figure charts of protocols.)

Clinical symptoms of cancer and CHINESE ACUPRESSURE POINTS by ASPEUS, Allahabad.

- | | | |
|------------------------|---|---|
| 1. Constipation | } | Treat Stomach heat – P 6, Sp 6, St 21, 44, 45 |
| 2. Nausea and vomiting | | CV 13, 12, 10, (L&R) YBM |
| 3. Breathlessness | - | Liv 3 (L&R) YBM |
| 4. Pain | - | Li11, St 36, (L&R) YBM, sedates pain |

Symptoms due to tumour :-

- | | | |
|--------------------------|---|---|
| 5. Oral Mucosities | } | Ly 2, St 6, 7, 36, 44, Li 4, 5, GV 25, CV 24, |
| 6. Malignant Ulcers | | TW 5, GB 20 (L&R) YBM |
| 7. Anorexia and Fatigued | - | P 6, Sp 6, St 21, 44, 45, |
| | | Cv 13, 12, 10 (L&R) YBM |
| 8. Anaemia | - | Sp 4 (L&R) WBM |

Psychological symptoms :-

- | | | |
|------------------------|---|---|
| 9. Anxiety | } | Heart fire blazing |
| 10. Depression | | H 7, 8, 9, CV 15 (L&R) YBM, Sp 6, K 6 (L&R) WBM |
| 11. Emotional Distress | | & Liver fire blazing |
| 12. Spiritual distress | | Liv 2, 3, GB 13, 20 (L&R) YBM |

Clinical symptoms of cancer and AYURVEDIC ACUPRESSURE POINTS by
ASPEUS, Allahabad

- | | | |
|--|---|---|
| 1. Constipation | - | Rt SF 5 spm- 45sed 378tone |
| 2. Nausea and vomiting | | |
| a) Acute gastritis | - | F 3, 4 - V jts - 2, 3, 9 sed 0, 1, 4 tone |
| b) Heart, throat burning | - | F 0 - V, K jts - 2, 3, 9 sed 0, 1, 4 tone |
| c) Abdominal distension
with burning, acidity | - | F 4, 8 K jts - 2, 3, 9 sed 0, 1, 4 tone |
| d) Chest, abdomen distension,
chronic acidity | - | F 3, 4, 5 - 3spm - 2, 3 sed 1, 4 tone |
| 3. Breathlessness | | |
| a) Both SF 1 spm | - | 4, 5 sed 3, 6 tone |
| b) Both SF 4 spm | - | 2, 4 sed 3, 6 tone |
| c) LMM *7,8 (OF) | - | 4, 5, 9 sed 0, 3, 6 tone |
| d) LMM *0,1,2 (NF) | - | 4, 5, 9 sed 0, 3, 6 tone |
| 4. Pain | | |
| a) F 5 to 8 V jts | - | 0, 1, 2 tone 7, 8, 9 sed |
| b) Both SF V jts | - | 2, 4, 5, 9 sed 0, 3, 7 tone |
| c) Both RF K jts | - | 2, 4, 5, 9 sed 0, 3, 7 tone |
| Symptoms due to tumour :- | | |
| 5. Oral Mucosities | | |
| a) F 3 – 0, 1, 2, 3 spm | - | 2, 3 sed 1, 4 tone |
| b) F 5 - 0 spm | - | 2, 3 sed 1, 4 tone |
| c) F 0, 9 - V jts | - | 2, 3 sed 1, 4 tone |
| 6. Malignant Ulcers | | |
| a) F 0, 9 - V jts | - | 1, 2, 4, 5, 7, 9 sed 0, 3, 6, 8 tone |
| b) F 0, 9 - K jts | - | 1, 2, 4, 5, 7, 9 sed 0, 3, 6, 8 tone |
| c) F 7, 8 - K jts | - | 0, 1, 2, 3, 4 sed 5, 6, 7, 8, 9 tone |
| 7. Anorexia and Fatigue | | |
| a) F 3, 4, 5 - 3 spm | - | 2, 3 sed 1, 4 tone |
| b) F 1 - 5 spm | - | 4, 5 sed 3, 7, 8 tone |
| c) F 0, 9 - all LVM | - | 1, 4, 5, 9 sed 0, 3, 6, 8 tone |
| 8. Anaemia | | |
| a) F 4 - 9 spm | - | 3, 4 tone 5 sed |
| b) F 3 - 0 spm | - | 3, 4 tone 5 sed |

Psychological symptoms :-

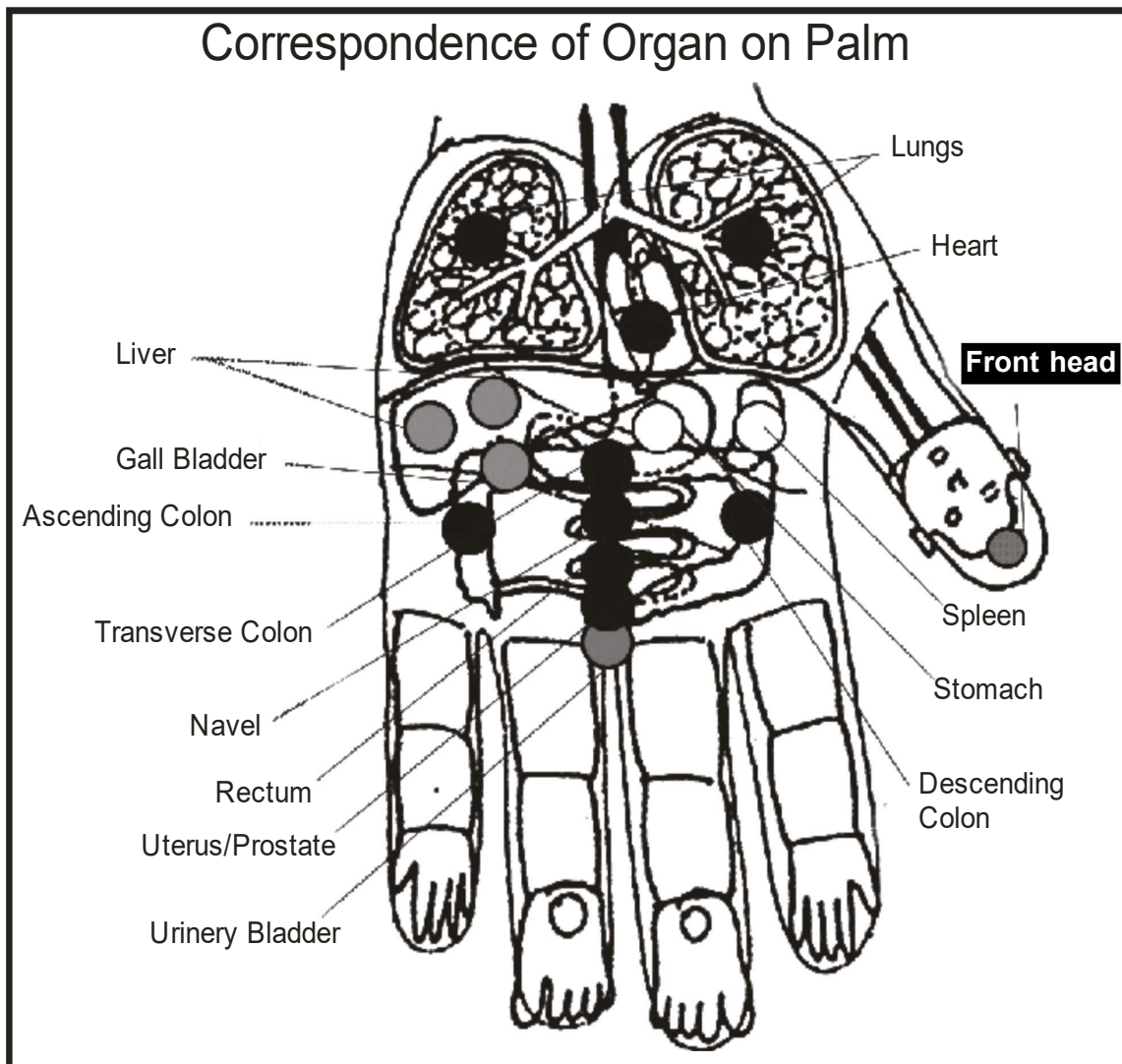
9. Anxiety
- a) F 1, 2 - V jts - 2, 4, 5, 9 sed 0, 3, 7 tone
 - b) F 5, 6 - K jts - 2, 4, 5, 9 sed 0, 3, 7 tone
10. Depression - F 1, 2 - 7/8 RLHM - 0, 3, 8 tone 4, 7, 9 sed
11. Emotional Distress
- a) F 3 - all phalanx - cluster star
 - b) F 3 - all jts - methi strip
12. Spiritual distress
- a) F 9 - all phalanx - cluster star
 - b) F 9 - V jt - methi strip
 - c) F 9 - K jt - 0, 1, 3, 6, 8 tone 2, 4, 5, 7, 9 sed

Detailed points by Ayurvedic acupressure for the treatment of the 3 specific cancers –

1. Oral cancer
- a) F 1, 4 - P jt - 1, 2, 4, 5, 7, 9 sed 0, 3, 6, 8 tone
 - b) F 7 - 2, 5, 6, 7 spm group - 1, 2, 4, 5, 7, 9 sed 0, 3, 6, 8 tone
 - c) F 3 - 0, 1, 2 spm group - 2, 3 sed 1, 4 tone
 - d) F 0 - 0/9 LVM, 0/9 LHM - 1, 4, 5, 9 sed 0, 3, 6, 8 tone
2. Breast Cancer (Left Breast)
- a) Left breast corr - sedation chakra
 - b) F 9 - V jt - 0, 1, 2, 3, 4 tone 5, 6, 7, 8, 9 sed
 - c) F 9 - K jt - 0, 1, 2 tone 7, 8, 9 sed
 - d) F 7 - K jt - 0, 1, 2 tone 7, 8, 9 sed
- (Right Breast)
- a) Right breast corr - sedation chakra
 - b) F 0 - V jt - 0, 1, 2, 3, 4 tone 5, 6, 7, 8, 9 sed
 - c) F 0 - K jt - 0, 1, 2 tone 7, 8, 9 sed
 - d) F 8 - K jt - 0, 1, 2 tone 7, 8, 9 sed
3. Cervix Cancer
- a) F 5, 8 - P jts - 0, 1, 2 sed 7, 8, 9 tone
 - b) F 7, 8 - K jts - 0, 1, 2, 3, 4 sed 5, 6, 7, 8, 9 tone
 - c) Cervix corr - sedation chakra

B - Work on Ayurvedic Turyathata system and a synopsis of treatment feedbacks by Miss P Agarwal, based on Brain and spine points.

The Ayurvedic Tulyarthata system commonly known as the ayurvedic correspondence system is much easier than the sujok correspondence system , in respect that there is almost no overlapping of points concept in this. Also it is easy and simple to learn and use. Its detailed description is available in the book – Agnivesh Ayurvedic Acupressure. A brief of this correspondence diagram is presented here.

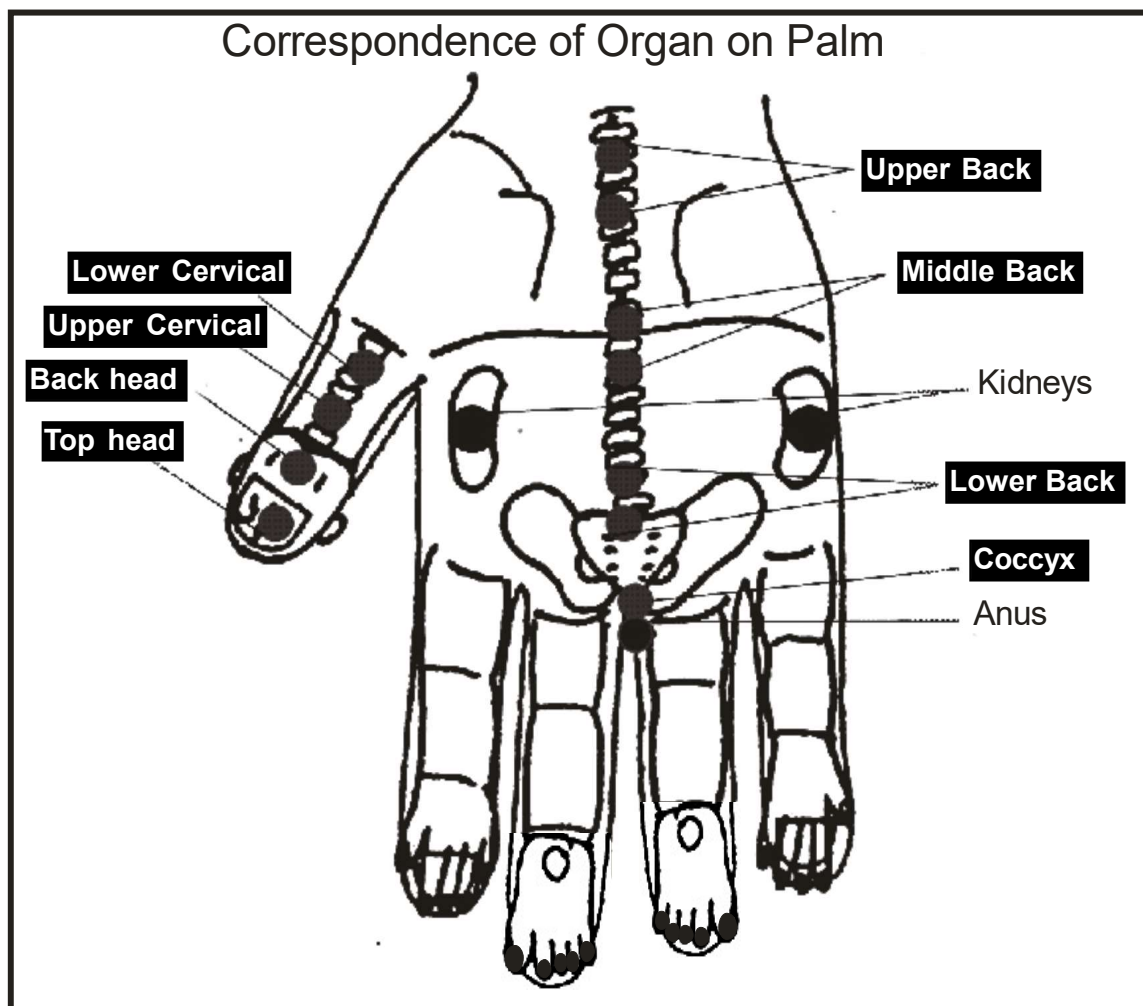


Based on this, here is presented primarily the points related to Brain segments mainly front head, top head and back head. To check the brain of a patient at a gross level, one can press these 3 points on left thumb and ask for the pain sensitivity on points. The painful points are selected for treatment. Then after magnet/seed can be applied on the painful head points as follows -

Front head corr - cluster star or chakra (after inference)

Top head corr - 4 methi seeds or BM3 (after inference)

Back head corr - 4 methi seeds or BM3 (after inference)



A short survey on this is presented below-

Out of 15 patients worked upon regarding different disorders (age group 30-70 years) , the affected brain segments involved/ painful were –

Front head	Top head	Back head
1/15	1/15	13/15

This quiet clearly indicates that in day to day patients, the back head region (brain stem, medulla, pons, cerebellum) is being highly affected. Stress, strain, tensions, insomnia, depression, disinterest etc symptoms cover up this regions of the brain. Coordination with the body , balancing, motor actions, muscle activity etc are also being highly affected.

As per inference on these brain segments, almost 100% back head corr were found to be SEDATED by BM3 . A hyperactivity of back head region (back brain / brain stem) is leading to many mind body disorders which can be easily be treated by corr system through seeds/ magnets. The response rate indicated that 80-90% patients had relaxed routine than previous, better sleep and more control over mind and body.

Another short survey was done spine related corr points . The spine points were divided for testing, into following categories and the painful ratio is below –

Cervical	Upper back	Mid back	Low back	Coccyx
14/15	2/15	6/15	6/15	1/15

This above statistics shows that among our entire spine, the MOST AFFECTED PART is the CERVICAL REGION. In 14/15 patients , this region was found painful and as per inference, all 100% patients were done SEDATION BY 2 CHAKRA MAGNETS on cervical corr points. This indicates that we are keeping our necks in still positions and HARDLY MOVING IT. It is bring neck pains, hand tremors, numbness, weak arms, painful extremities, heavy shoulders, upper bulging of back etc etc. This is mostly due to long sitting in offices or women doing neck bending hose hold works. All patients were advised to keep their necks bend backwards 2-3 times a day and leave for 30-60sec for relaxation during a day. We generally bend our necks downwards and forget to bend back. This lead to a relaxation rate of 50% in neck related disorders in patients.

The treatment was give in following manner on these by cluster stars (CS) or Chakras (CH)

Cervical	Upper back	Mid back	Low back	Coccyx	
2 CS	2 CS	2 CS	2 CS	1 CS	OR
2 CH	2 CH	2 CH	2 CH	1 CH	

In most of the patients, the inference reported was again almost 100% SEDATION BY CHAKRAS.

Thus it indicates that a HYPERACTIVITY of spine segments specifically CERVICAL is leading us to stiff neck, stubborn nature, egoistic attitudes, painful arms and restlessness, etc. this neck is a bridge between head and trunk and so its stiffness/ blockage can lead to uncoordinated mind body leading to many grave diseases.

This short survey on brain and spine corr points thus indicates that MOST AFFECTED PARTS OF OUR BRAINS AND SPINE ARE = BACK HEAD AND CERVICAL.

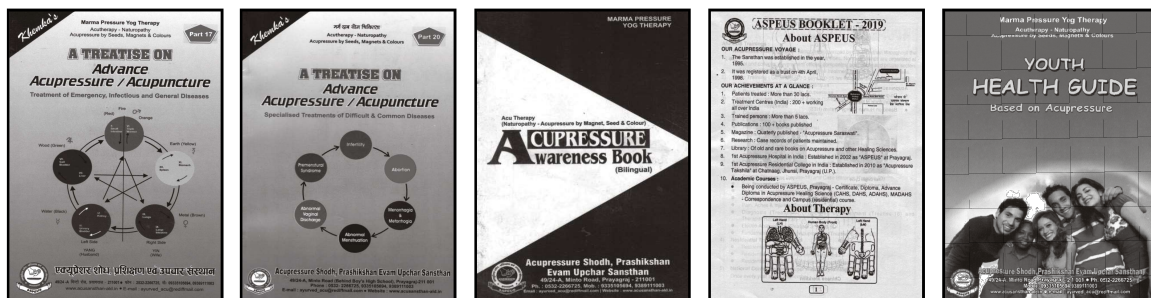
So, lets be careful and take care of them !.

C- New books published after conference 2018 till aug 2019.

In the recent time, after Nov 2018 conference(around 11 new books mentioned in magazine 2018-3/4 issue, 2019-1st issue), some further book works have been carried out by a new team head Mrs Seema Seth, Faculty ASPEUS. (mob- 7668751650). They are as follows-

- 1- Treatise 17 Hindi – converted to digital format
- 2- Treatise 20 hindi – converted to digital format
- 3- Awareness book – converted to bilingual (hindi and English)
- 4- Aspeus booklet 2019 – the free pamphlet converted to a booklet with ALL details of aspeus related to about it, its trainings, books, tools, schemes, branch centres etc etc .
- 5- Youth health guide - a new pocket book, same format as of children health guide earlier, covering youth related day to day issues and their acu points in an attractive mannar.

Covers of all these books and their prices and contact numbers for placing orders are detailed below -



For order and enquiry, Contact (10 AM to 5 PM only) :

- | | | | |
|----------------|------------|-----------------|------------|
| 1. Sriram | 9369857375 | 2. Manish Singh | 9198960301 |
| 3. Anil (Raju) | 9355105694 | 4. Sushma | 9415284964 |
- For any grievance, e-mail to : ayurved_acu@rediffmail.com

D- Further developments and queries

ASPEUS is going on with full vigor with its all sections /departments. Any new proposals/ suggestions/complaints, you all are most welcome to email at ayurved_acu@rediffmail.com to Mr Karan Kesarwani, to be considered in official working committee meetings weekly.

Any queries regarding any specific department i.e treatment or training etc, kindly contact ONLY department heads as mentioned in every magazine notices section and also in website www.acusansthan-ald.in.

Any queries for individual attentions, kindly email to their personal ids.



I further invite our acu therapists to kindly send their research works/ thoughts/ visions in magazine email id- aspeus.mag@rediffmail.com in short scales to be put forth among 1000s of saraswati magazine members. Let your work reach all before you leave ! Thanks and regards towards all.

E- New Research Document in field of Ayurvedic Acupressure (CM in AM)

Key words : Acu points = Energy medicine = Chemical without chemical

After experiences of some solved cases we can say that '0' number of *NCH are very effective **energy medicine (Energy medicine = chemical without chemical which influences the chemicals of our body (Human body is composition of hydrogen, Oxygen, Carbon and Nitrogen)).**

According to TCM Lungs meridian is located in outer side of thumb, whereas according to Dr. R. Voll it is located in inner side of thumb. In this condition if we choose *NCH (0,9) - '0' number then it will prove very effective energy medicine because it is centre point of both pathway and it has similar influence on both meridian of thumb.

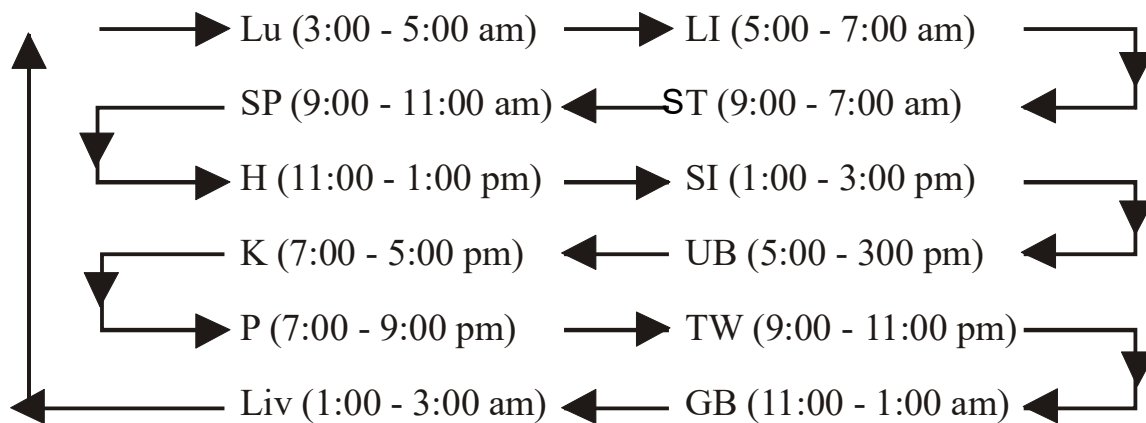
On same basis number '0' of other NCH will have same effect on meridian of NCH's fingers.

Thus we can use of this concept in dual to multi organs disorders/meridians imbalances.

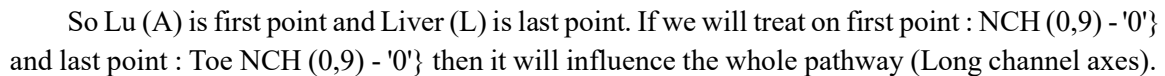
As we know that organ clock theory in TCM is very important theory. In this concept ever have think, why it sarts from lungs? Because during birth time first we receive cosmic energy directly in lungs. It we receive it properly then our healthy life starts and if we don't get it properly our unhealthy journey starts.

Integration of cocepts of all branches of Acupressure/Acupunture viz. TCM, Dr. Voll's Electro, Sujok, Ayurvedic Acu-subtle but multi-dimensional treatment.

Now see the energy circulation/transfer pattern in organs :



Long Channel Axes :



NCH (0,9) - '0' is substitute of Lung 11 and Ly1.

We can make short channel axes like channel of two meridians, three meridians, four meridians..... depend on organ/pathway involvement in diseased condition.

Paralysis (Treat in opposite side) :

Pain in right sided body (Treat in same side)

If pain from toe to head	NCH (0,9) - '0' ↑
	Toe NCH (0,9) - '0' ↓

1. Case Study

- **Patient Name** : **Smt. Shashi Prabha**
1226A/1047F1, Malviya Nagar, Prayagraj
Mob. : 9598006006
- **Diseases** : Acute pain in whole body, Insomnia
- **Pathology Report** : Low Haemo globin count with blood cells disorder, Iron deficiency....
- **Diagnosis** : Multi organs involvement and bone marrow dysfunction
- **Treatment** : NCH (0,9) - '0' ↓ (L & R)
Toe NCH (0,9) - '0' ↑ (L & R)
- **Result** : *90% relief in pain after 30 min. of points application.*

Continue....

Hairs are manifestation of chakras (Shahsrar Chakra) and its family.